

# Victoria House Medical Imaging upgrades Nuclear Medicine Services and now provides fused SPECT Nuclear Medicine with CT or MRI images for improved diagnostic confidence.

Victoria House Medical Imaging is delighted to announce the upgrade of Nuclear Medicine services with the installation of a GE Millennium dual headed gamma camera and a state of the art GE Xeleris 3 work station.

This imaging system can combine/fuse images from SPECT Nuclear Medicine with multislice CT or MRI images, resulting in greater clarity and accuracy which will improve both sensitivity and specificity of this functional imaging modality.

The upgraded camera can also provide your patients with shortened acquisition times and improved comfort.

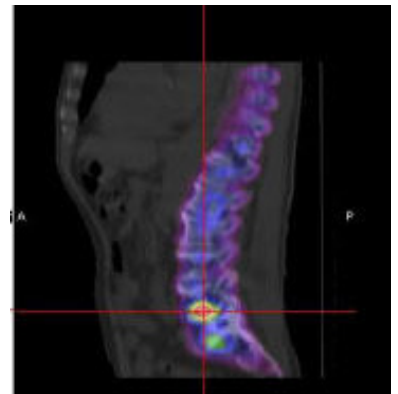
## 1. Sagittal Lumbar Spine Images



NM Bone Scan Image



CT scan



Fused/combined

Please note there is no change to cost or increase in radiation dose when image fusion is performed.

To discuss the clinical applications of this improved Nuclear Medicine service please call Dr Andrew Rotstein direct on 8697 0111.

Victoria House Medical Imaging  
316 Malvern Rd, Prahran  
T: 9529 7333



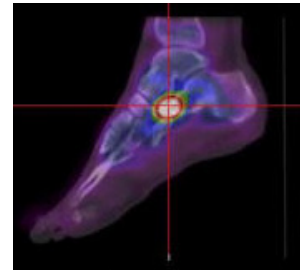
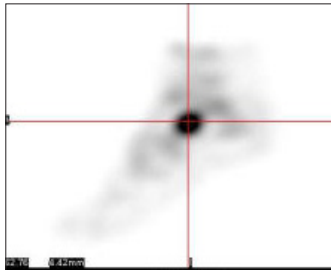
# UPGRADED NUCLEAR MEDICINE SERVICES MEANS BETTER DIAGNOSIS AT VICTORIA HOUSE MEDICAL IMAGING

Nuclear Medicine

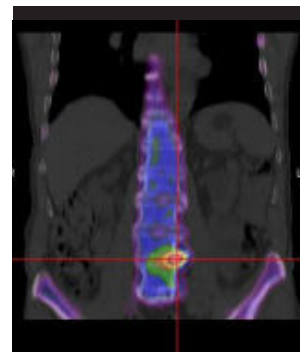
CT

FUSED

Foot



Lumbar Spine



Nuclear Medicine Services have expanded for your convenience

- \*Brain imaging
- \*Biliary imaging
- Bone imaging
- Bone marrow imaging
- Breath test
- \*Cardiac gbps
- \*Colonic transit
- \*Gastric emptying

- Gallium imaging
- Gi blood loss imaging
- \*Lacrimal imaging
- Liver/spleen imaging
- Liver red blood cell imaging
- Lung ventilation & perfusion imaging
- Lymphoscintigraphy
- Meckels imaging

- \*Oesophageal transit
- Parathyroid imaging
- Renal imaging
- \*Small bowel transit
- Whole body tumour imaging
- Thyroid imaging
- White blood cell imaging

\* NEW procedures available at VHMI

To discuss the clinical applications of Nuclear Medicine please call Dr Andrew Rotstein direct on 8697 0111.

For patient appointments please call;  
**Victoria House Medical Imaging**  
316 Malvern Rd, Prahran T: 9529 7333

